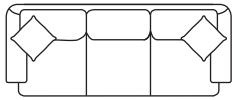
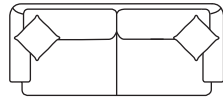


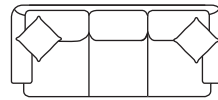
STEP 1 SELECT YOUR PIECE



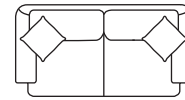
LS1 SOFA



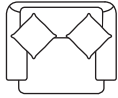
LS7 TWO CUSHION SOFA



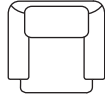
LS5 SHORT SOFA



LS2 LOVESEAT



LS8 CHAIR & A HALF



LS3 CHAIR



LD6 STORAGE OTTOMAN & A HALF
Length 36" Depth 28" Height 19"
Select base choice only



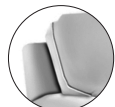
LD4 STORAGE OTTOMAN
Length 28" Depth 22" Height 18"
Select base choice only

Throw pillows:
LS1, LS2, LS5, LS7 and LS8 standard with 2-19"

STEP 2 SELECT YOUR ARM (Will determine dimensions)

		Length	Depth	Height	Arm Height	Seat Height	Seat Depth	Between Arms
	S= Sock Arm							
	LS1 Sofa	89"	38"	38"	26"	20"	21"	72"
	LS7 Two Cushion Sofa	83"	38"	38"	26"	20"	21"	66"
	LS5 Short Sofa	83"	38"	38"	26"	20"	21"	66"
	LS2 Loveseat	65"	38"	38"	26"	20"	21"	48"
	LS8 Chair & A Half	49"	38"	38"	26"	20"	21"	32"
	LS3 Chair	37"	38"	38"	26"	20"	21"	22"
	LS1 Sofa	89"	38"	38"	26"	20"	21"	72"
	LS7 Two Cushion Sofa	83"	38"	38"	26"	20"	21"	66"
	LS5 Short Sofa	83"	38"	38"	26"	20"	21"	66"
	LS2 Loveseat	65"	38"	38"	26"	20"	21"	48"
	LS8 Chair & A Half	49"	38"	38"	26"	20"	21"	32"
	LS3 Chair	37"	38"	38"	26"	20"	21"	22"
	LS1 Sofa	82"	38"	38"	26"	20"	21"	72"
	LS7 Two Cushion Sofa	76"	38"	38"	26"	20"	21"	66"
	LS5 Short Sofa	76"	38"	38"	26"	20"	21"	66"
	LS2 Loveseat	58"	38"	38"	26"	20"	21"	48"
	LS8 Chair & A Half	42"	38"	38"	26"	20"	21"	32"
	LS3 Chair	32"	38"	38"	26"	20"	21"	22"

STEP 3 SELECT YOUR BACK



K=Loose Knife



B=Loose Boxed



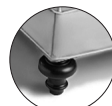
X=Loose Bedpillow

STEP 4 SELECT YOUR BASE

Add an optional swivel to your chair.
Write SW after your base choice:
SW=Swivel Base - available on LS3
and LS8 chairs with base 3



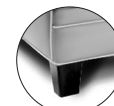
3=Upholstered w/ Band



4=Turned Leg



5=Bun Foot



6=Tapered Leg

STEP 5 SELECT YOUR LEATHER APPLICATION

Option A

Sofas, Loveseats and Chairs

Leather is applied to inside arms, front rail and arm panels
Fabric is applied to seat cushions, back cushions, outside arms, inside and outside back and throw pillows

Ottomans

Leather is applied to bottom rail
Fabric is applied to top cushion

Option B

Sofas, Loveseats and Chairs

Leather is applied to inside and outside arms, inside and outside back, front rail and arm panels
Fabric is applied to seat cushions, back cushions and throw pillows

Option C

Sofas, Loveseats, Chairs and Ottomans

Leather is applied to entire frame
Fabric is applied to throw pillows

Example

A leather, standard depth loveseat with a T cushion, rolled arms, loose knife back, bun feet and all leather should be indicated this way:

LS2 - R K 5 C
 Leather T Cushion Loveseat Rolled Arm Loose Knife Back Bun Foot All Leather